

Guides
your way



System green

Real-time fluorescence imaging with the
ENDOCAM® Logic 4K camera platform

System green

Real-time fluorescence imaging
with the ENDOCAM Logic 4K camera platform

System green from Richard Wolf is a visualization solution for real-time ICG/NIR fluorescence imaging which meets the highest standards of endoscopic imaging.

ICG/NIR fluorescence imaging has become one of the most valuable technologies in the field of minimally invasive surgery for applications including intraoperative assessment of visceral perfusion (e.g., anastomosis), visualization of biliary structures in fluorescence cholangiography, and lymph node mapping (e.g., visualization of sentinel lymph nodes during lymph node dissection).

High-resolution image quality meets ground-breaking visualization

System green, an extension of the ENDOCAM Logic 4K camera platform, enables brilliant fluorescence imaging in real time.

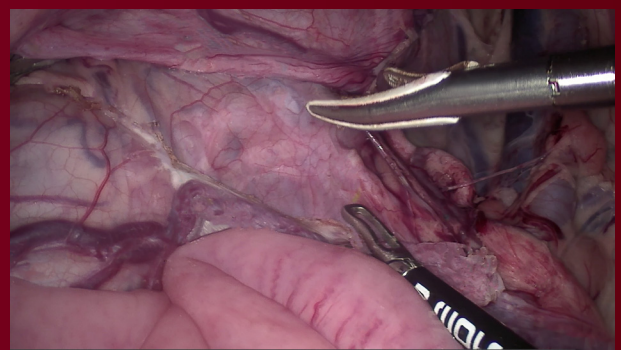
- **Simultaneous ICG/NIR and white light endoscopy with brilliant image quality**
- **Clear visualization of visceral perfusion**
- **Superior exposure of biliary anatomy in fluorescent cholangiography**
- **Precise visualization of lymphatic system**





White light

System green can also be used for conventional, high-resolution "white light" endoscopy. With only a touch of a button, users can flip between white light and fluorescence imaging.



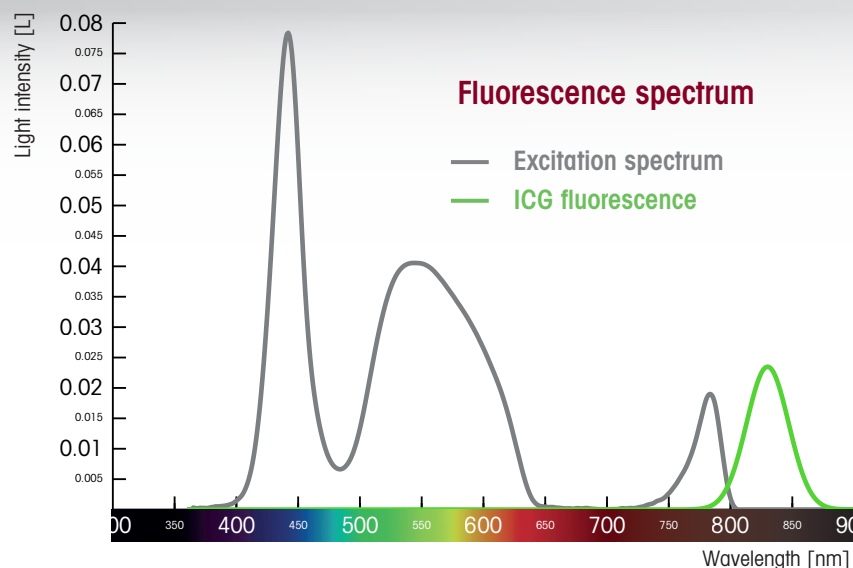
ENDOLIGHT LEDgreen

Powerful illumination for clear visualization

ENDOLIGHT LEDgreen is an innovative solution for use in both standard white light endoscopy and ICG/NIR fluorescence imaging.

The use of advanced LED technology eliminates the need to use a laser diode to visualize the ICG/NIR information. The LED illumination produces a homogeneous, consistently bright endoscopic image allowing the user to cover two applications with one system.

- Easy operation—select white light or ICG/NIR illumination with a simple press of a button
- *dialog* Technology—automatic adjustment of light intensity in conjunction with ENDOCAM Logic HD & 4K camera controllers
- Reduced service and operating costs as a result of extended lifespan of latest LED technology (up to 15,000 hours)



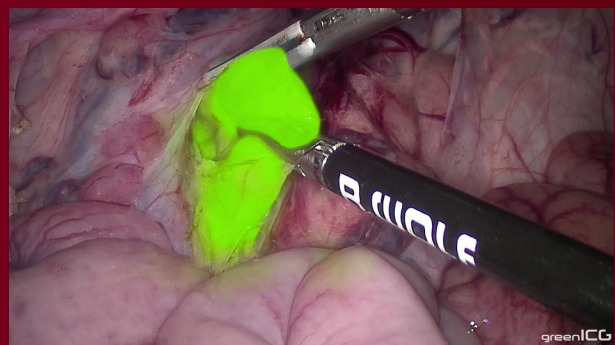
The absorption spectrum of ICG (indocyanine green) is located in the near-infrared range (NIR). ICG absorbs the light in the range of 600 nm to 900 nm and emits the fluorescence between 800 nm up to 850 nm. Thus, **System green** allows visualization and detection of the fluorescence intraoperatively.





greenICG

In greenICG mode, the conventional white light endoscopic image is simultaneously combined with the ICG/NIR image information in real time, at the touch of a button. This allows the tissue to be differentiated with a high level of detail and contrast.



System green

Real-time fluorescence imaging with the ENDOCAM Logic 4K camera platform



System green is designed to meet the needs of the busy Operating Room. Each component guarantees efficient, flexible, and future-proof use across multidisciplinary laparoscopic applications.

ENDOCAM Logic 4K Camera Controller

The ENDOCAM Logic 4K camera controller enables endoscopic imaging in native 4K UHD resolution with ICG/NIR visualization via two unique Special Imaging Modes.

- **Special Imaging Modes:**
 - **greenICG** (white light image with ICG overlay)
 - **greenICG pure** (grayscale image with ICG overlay)
- **High-resolution 4K UHD endoscopic image**
- **Existing camera controllers can easily be upgraded to the latest software enabling ICG/NIR capability**

ENDOCAM Logic Camera Head green

- **For use with ENDOCAM Logic HD and 4K camera controllers**
- **Also suitable for use in white light endoscopy**
- **Digital image processing and signal transmission** with dedicated powerful NIR sensor for high fluorescence sensitivity
- **Lightweight and ergonomic**
- **Integrated lens (f=24 mm)** optimized for use in laparoscopy



PANOVIEW ULTRA Telescopes

With improved fiber optics and a superior lens system, the PANOVIEW ULTRA Telescopes deliver a stunning level of brightness and clarity.

- **Optimized for 4K UHD and ICG/NIR applications**
- **Increased Number of Light Fibers** deliver more light to the surgical site than traditional fiber optic technologies
- **Low-Dispersion Glass Rod Lenses** for improved peripheral sharpness
- **Superior fiber optics** for natural color visualization in both white light and **System green mode**—greenICG

Fusion Fiber Light Cables

Engineered with fused-glass technology, which eliminates space between individual light fibers, fusion light cables transmit approximately 20% more light than standard light cables.

- **Higher temperature resistance**
- **Anti-kink protection**
- **Autoclavable** for cost-effective sterilization
- **Increased light transmission** compared to standard light cables



The greenICG pure mode enables specific, high-contrast visualization as well as differentiation of tissue. The grayscale visualization enables detailed examination of key structures (e.g., lymphatic vessels and lymph nodes).



System green

Ordering Information

Camera Controller

ENDOCAM Logic 4K Camera Controller Bundle 552530115

Includes:
ENDOCAM Logic 4K camera controller (5525301), remote control (5525401), power cable (N710171), 8 GB USB stick (56540028), HDMI/HDMI cable, 3.0 m (103847)

Camera Head

ENDOCAM Logic Camera Head green with integrated lens (f=24mm) 85525812

Telescopes

PANOVUE ULTRA Telescope, 10 mm, 305 mm WL
0° **8934461**
30° **8934462**
50° **8934463**

PANOVUE ULTRA Telescope, 10 mm, 440 mm WL
0° **89344416**
30° **89344426**
50° **89344436**

*For use only with 27", 32" and 55" Sony Medical Monitors

Light Source

ENDOLIGHT LEDgreen Bundle 51650025

Includes:
ENDOLIGHT LEDgreen light source (5165002), patch cable, RJ45 SFTP, 0.5 m (72325378), power cable (N710171)

Foot control rockerswitch for ENDOLIGHT LEDgreen 2030.105

Fusion Fiber Light Cable

Fusion Fiber Light Cable Bundle, Ø 5.0 mm, 806550301

Includes:
adapter projector-side (8095.07), adapter endoscope-side (809509) and fusion fiber light cable (80655030), 3.0 m

4K Medical Monitors

27" Sony (Richard Wolf-Branded) Monitor LMD-X2705N

27" Sony (Richard Wolf-Branded) Monitor Bundle LMD-X2705N_BNDL

Includes:
27" Sony (Richard Wolf-Branded) Monitor (LMD-X2705N), monitor cover (N800406), thumb screws (N900692) and power supply (AC-300MD)

32" Sony (Richard Wolf-Branded) Monitor LMD-X3200N

32" Sony (Richard Wolf-Branded) Monitor Bundle LMD-X3200N_BNDL

Includes:
32" Sony (Richard Wolf-Branded) Monitor (LMD-X3200N), monitor cover (53700031), thumb screws (N900692) and power supply (AC-300MD)

31" Foreseeson (FSN) Monitor FS-P3102D

55" Sony (Richard Wolf-Branded) Monitor LMD-X550NB

Monitor Accessories

Power Supply AC-300MD*
Thumb Screws (Pack of 4) N900692

27" Richard Wolf-Branded Monitor Cover N800406

32" Richard Wolf-Branded Monitor Cover 53700031

55" Richard Wolf-Branded Monitor Cover 53700055

Specifications subject to change without notice
2222-06.01 - 11.22.USA